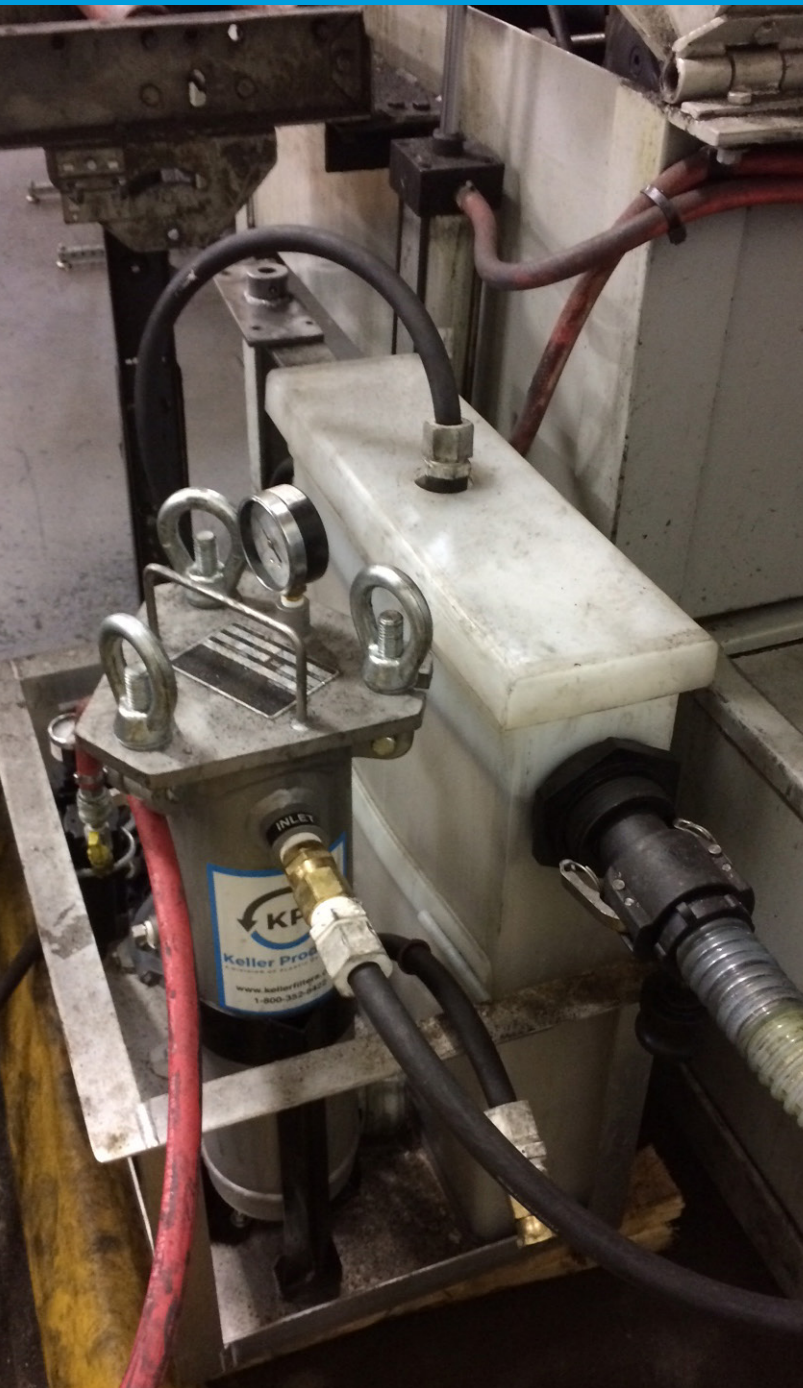


Oil Separators For Hot Wash Water

Remove oil from aqueous cleaning solutions utilizing patented oil separation technology



ADVANTAGES:

- Patented coalescing media package allows for compact design
- Rugged fabricated plastic design keeps units extremely cost effective
- Units ship via UPS requiring only a shop compressed air connection to run

APPLICATIONS:

Keller Units separate oil from aqueous parts washer water and return the cleaned water to the feed tank at a flow rate up to 180 GPH. The model #385 has a stainless steel bag filter for heavy solids loading, while the TKO-10-HT has a cartridge filter with replaceable filter element for lighter solids loading.

Specifications and Ordering Information

TKO-10-HT

| | |
|--|--|
| Cleaned Water Flow Rate | 180 GPH |
| Filter | Cartridge Filter |
| Max Temp., Continuous Operation | 160°F |
| Inlet Devices Provided | 1 each 555-08 fixed inlet 1 each RSM-3 floating inlet |
| Compressed Air Requirement | 1/4" NPTF fitting |
| Electricals | None |
| Dimension, LxW | 14" x 14" |
| Shipping Weight | 47 lbs. |
| PRICE | \$1995.00 |



MODEL #385

| | |
|--|--|
| Cleaned Water Flow Rate | 180 GPH |
| Filter | Stainless Bag Filter |
| Max Temp., Continuous Operation | 160°F |
| Inlet Devices Provided | 1 each 555-08 fixed inlet 1 each RSM-3 floating inlet |
| Compressed Air Requirement | 1/4" NPTF fitting |
| Electricals | None |
| Dimension, LxW | 20" x 20" |
| Shipping Weight | 100 lbs. |
| PRICE | \$3795.00 |



ADDITIONAL INLET DEVICES

| | |
|--|-----------------|
| Fixed Inlet Device, High Temp. — #555-08 | \$150.00 |
| RSM-3 Floating Inlet Device | \$125.00 |

REPLACEMENT POLYPROPYLENE FILTER BAGS

NOTE:

- 5 EACH 25-MICRON POLYPROPYLENE FILTER BAGS SUPPLIED WITH MODEL #385
- 3 EACH REPLACEMENT CARTRIDGE FILTERS SUPPLIED WITH TKO-10HT

| | |
|--|----------------|
| Model #385 (RAP-25) Pack of 5 each 25-micron bags | \$40.00 |
|--|----------------|

| | |
|--|---------------|
| Model TKO-10HT (R10-3150) Replacement cartridge filters | \$6.25 |
|--|---------------|